

**ICG** **INDOFINE Chemical Company, Inc.**

121 Stryker Lane, Bldg. 30, Suite 1 • Hillsborough, NJ 08844 • U.S.A.

Phone: (908) 359-6778 • FAX: (908) 359-1179

website: [www.indofinechemical.com](http://www.indofinechemical.com)

e-mail: [chemical@indofinechemical.com](mailto:chemical@indofinechemical.com)

**CERTIFICATE OF ANALYSIS**

Catalog Number: T-202

Product Name: 7,8,3',4'-TETRAMETHOXYFLAVONE

CAS Number: [65548-55-2]

Lot Number: 0604042

Chemical Formula: C<sub>19</sub>H<sub>18</sub>O<sub>6</sub>

Molecular Weight: 342.35

Melting Point: 199-200°C

Appearance: White powder

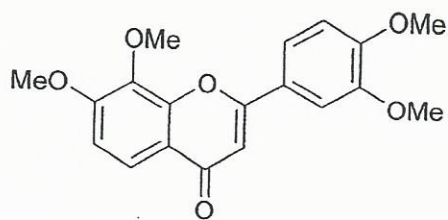
Solubility: Soluble in chloroform

TLC: n-Hexane:Ethyl acetate (1:1)

NMR Spectrum: Enclosed (conforms to the structure)

Storage: Store in cool, dry place

Purity(HPLC): 98.66%



# **INDOFINE Chemical Company, Inc.**

121 Stryker Lane, Bldg. 30, Suite 1 • Hillsborough, NJ 08844 • U.S.A.

Phone: (908) 359-6778 • FAX: (908) 359-1179

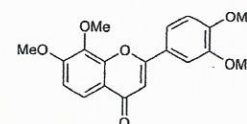
website: [www.indofinechemical.com](http://www.indofinechemical.com)

e-mail: [chemical@indofinechemical.com](mailto:chemical@indofinechemical.com)

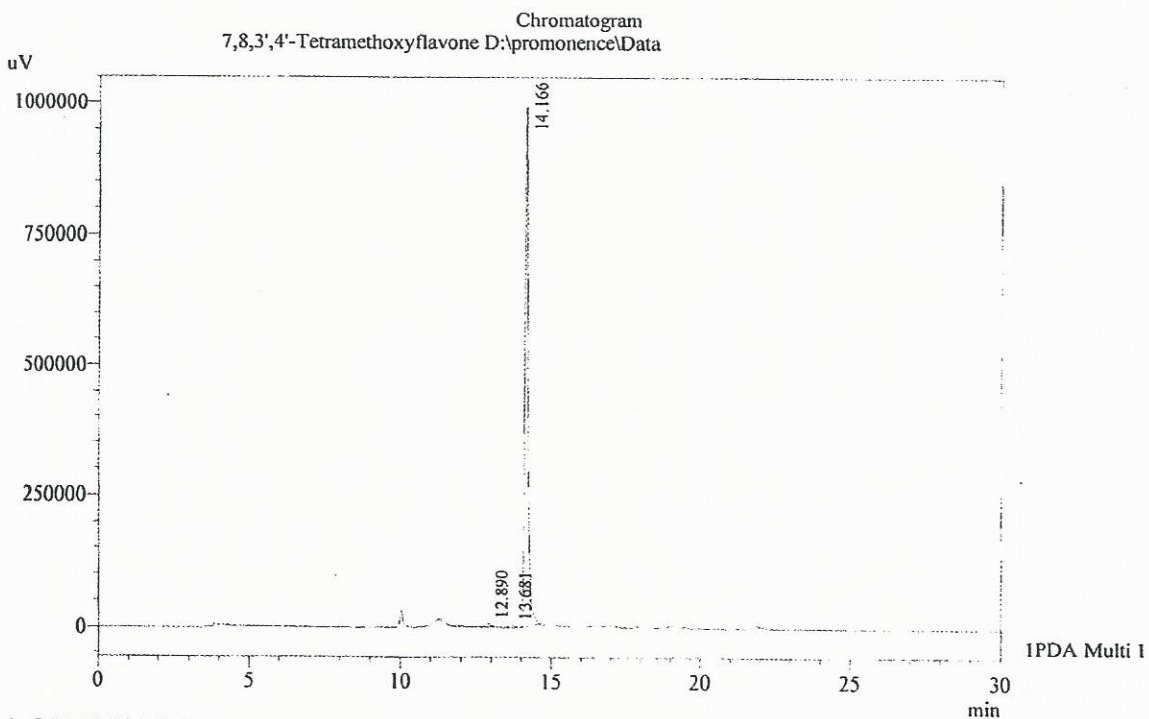
## HPLC ANALYSIS

Acquired by : Admin  
 Sample Name : 7,8,3',4'-Tetramethoxyflavone  
 Sample ID : Lot no:0604042  
 Injection Volume : 20 uL  
 Data Filename : 120615K.lcd  
 Method Filename : Linear Gradient.M.lcm

Catalog No.: T-202  
 Product Name: 7,8,3',4'-Tetramethoxyflavone  
 Lot No.: 0604042



Column : LUNA C-18, (250mm x4.6mm 5.0μ)  
 Flow : 1.000 mL/min.  
 Mobile Phase : A(0.05% TFA in Water) B(Acetonitrile)  
 0.01 90 10  
 12.0 10 90  
 20.0 10 90  
 23.0 90 10  
 30.0 90 10  
 Diluent : Acetonitrile



I PDA Multi 1 / 254nm 4nm

PeakTable

PDA Ch1 254nm 4nm

Peak#	Name	Ret. Time	Area	Area %	Relative Retention Time
1	RT:12.890	12.890	56856	0.76	0.91
2	RT:13.681	13.681	43607	0.58	0.97
3	7,8,3',4'-Tetraome flavone	14.166	7391276	98.66	1.00
Total			7491739	100.00	

# INDOFINE Chemical Company, Inc.

121 Stryker Lane, Bldg. 30, Suite 1 • Hillsborough, NJ 08844 • U.S.A.

Phone: (908) 359-6778 • FAX: (908) 359-1179

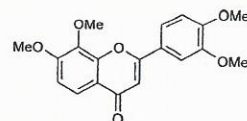
website: [www.indofinechemical.com](http://www.indofinechemical.com)

e-mail: [chemical@indofinechemical.com](mailto:chemical@indofinechemical.com)

Catalog No.: T-202

Product Name: 7,8,3',4'-Tetramethoxyflavone

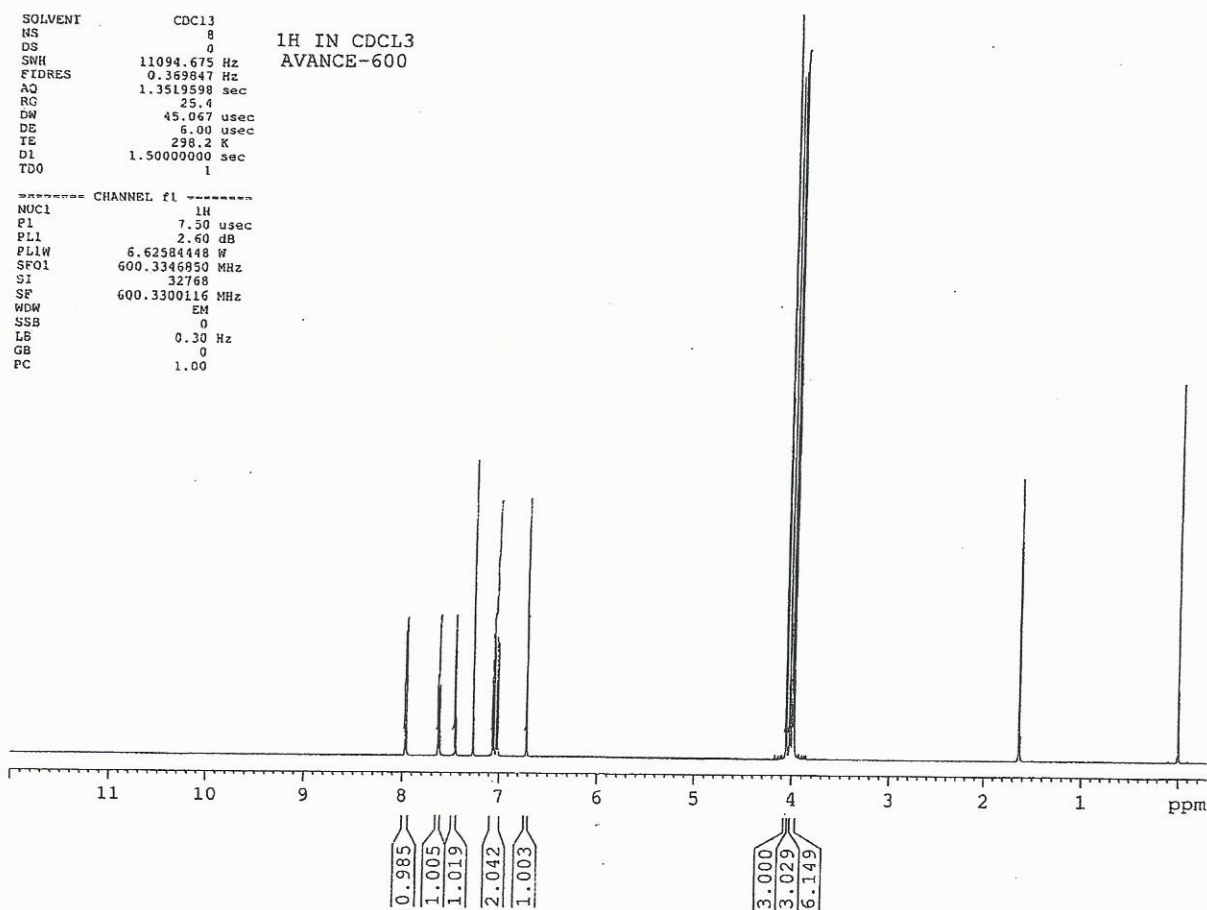
Lot No.: 0604042



SOLVENT CDCl<sub>3</sub>  
NS 0  
DS 0  
SWH 11094.675 Hz  
FIDRES 0.359847 Hz  
AQ 1.3519598 sec  
RG 25.4  
DW 45.067 usec  
DE 6.00 usec  
TE 298.2 K  
D1 1.5000000 sec  
TD0 1

1H IN CDCl<sub>3</sub>  
AVANCE-600

===== CHANNEL f1 =====  
NUC1 1H  
P1 7.50 usec  
PL1 2.60 dB  
PL1W 6.62584448 W  
SFO1 600.3346950 MHz  
SI 32768  
SF 600.3300116 MHz  
WDB EM  
SSB 0  
LB 0.30 Hz  
GB 0  
PC 1.00





# INDOFINE Chemical Company, Inc.

121 Stryker Lane, Bldg. 30, Suite 1 • Hillsborough, NJ 08844 • U.S.A.

Phone: (908) 359-6778 • FAX: (908) 359-1179

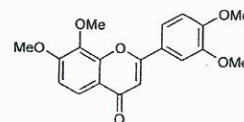
website: [www.indofinechemical.com](http://www.indofinechemical.com)

e-mail: [chemical@indofinechemical.com](mailto:chemical@indofinechemical.com)

Catalog No.: T-202

Product Name: 7,8,3',4'-Tetramethoxyflavone

Lot No.: 0604042



SOLVENT CDCl3  
NS 8  
DS 0  
SMH 11094.675 Hz  
FIDRES 0.369847 Hz  
AQ 1.351998 sec  
RG 25.4  
DW 45.067 usec  
DE 6.00 usec  
TE 298.2 K  
DI 1.5000000 sec  
TDO 1

1H IN CDCl3  
AVANCE-600

----- CHANNEL F1 -----  
NUC1 1H  
P1 7.50 usec  
PL1 2.60 dB  
PL1W 6.6258448 W  
SF01 600.3346850 MHz  
SI 32768  
SF 600.3300116 MHz  
WDW EM  
SSB 0  
VA 0.30 Hz  
GB 0  
PC 1.00

